



Web-Only Bonus Pattern

# Butterfly

Owned by Janet Lyles

Butterfly was first published as a pattern in the 1936 "Kansas City Star," and was instantly picked up by quilters looking for something a bit different. Most butterfly blocks, unlike this one, are appliquéd, not pieced. This Missouri-made quilt contains a variety of feedsack and dress-weight print scraps. We don't know who made it, but a date, May 7, 1943, is embroidered on one corner. The quiltmaker chose a curved quilting motif to accent the butterflies' fluttering wings.

## FINISHED SIZE

72 1/2" x 84 1/2"

## NUMBER OF BLOCKS AND FINISHED SIZE

42 Butterfly Blocks 8 1/2" x 8 1/2"

## FABRIC REQUIREMENTS

Ivory solid (block background) 2 yds.  
Assorted solids (head, body) 1/2 yd. total  
Assorted prints (wings) 2 1/4 yds. total  
Yellow solid (background) 3 3/8 yds.  
Beige solid (binding) 7/8 yd.  
Backing (piece lengthwise) 5 3/8 yds.  
Batting Double size

## OTHER MATERIALS

Sewing thread  
Embroidery floss, black  
Quilting thread (hand quilting)

## PLANNING A REPRODUCTION

Enjoy selecting a variety of prints and solids for your butterflies. This quilt would look wonderful made up in 30s reproduction prints.

## CUTTING INSTRUCTIONS

### Ivory solid

... 126 squares 1 3/4" x 1 3/4"



... 42 Template B  
... 42 Template B reversed (BR)  
... 42 Template E

### Assorted solids

cut 42 matching sets of:  
... 1 square 1 3/4" x 1 3/4"  
... 1 Template D

### Assorted prints

cut 42 matching sets of:  
... 1 Template A  
... 1 Template AR

cut 42 matching sets of:  
... 1 Template C  
... 1 Template CR

### Yellow solid

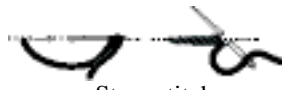
... 30 squares 9" x 9"  
... 6 squares 14" x 14", cut in half twice diagonally to make 24 quarter-square triangles (2 left over)  
... 2 squares 7 1/2" x 7 1/2", cut in half diagonally to make 4 half-square triangles

## PIECING THE BLOCK

**Step 1.** To make butterfly head, referring to **Diagram I**, stitch together 3 ivory solid 1 3/4" squares and 1 assorted solid 1 3/4" square. Work stem stitch (see **Diagram II**) with black embroidery floss to create antennae. Make 42 total.



Diagram I



Stem stitch  
Diagram II

**Step 2.** Stitch together matching assorted print Template A/AR fabrics, matching assorted print Template C/CR fabrics, and ivory solid Template B/BR fabrics to create wing/tail units (see **Diagram III**). Using set-in seams, sew wing/tail units to assorted solid Template D fabric. In same manner, set-in matching head unit and ivory solid Template E fabric to complete Butterfly Block. Make 42 total.

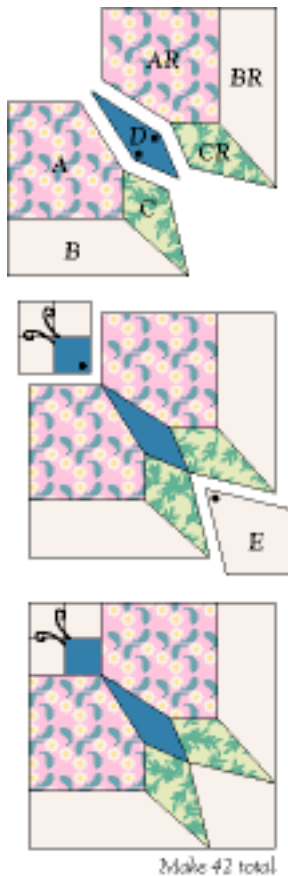


Diagram III

## QUILT TOP ASSEMBLY

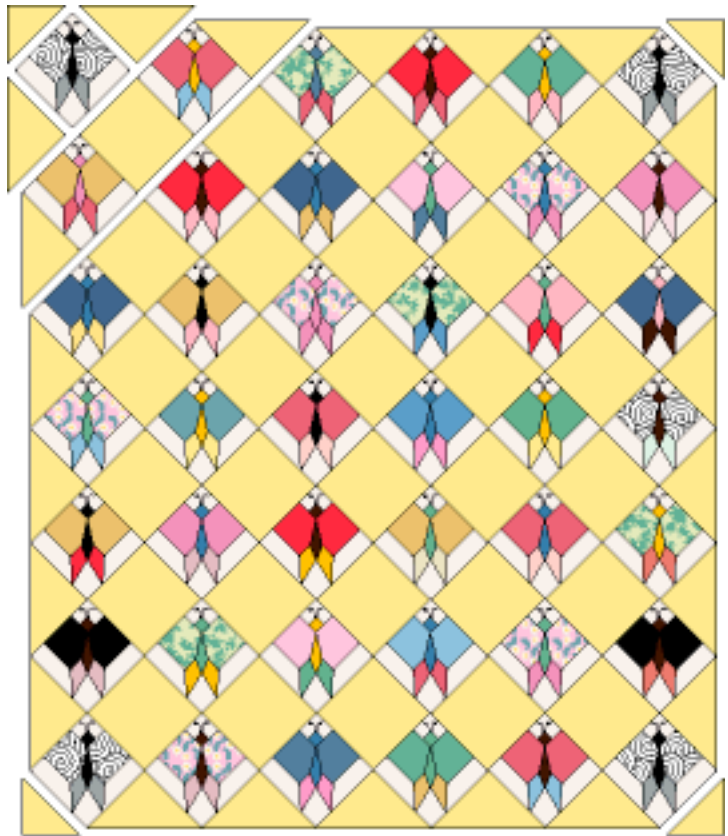
**Note:** The setting triangles on all edges and corners are cut oversized to allow trimming quilt edges even after assembly.

**Step 3.** Referring to **Assembly Diagram**, stitch 12 diagonal rows using blocks, yellow solid 14" quarter-square triangles and 9" squares. Stitch rows together. Sew yellow solid 7 1/2" half-square triangles to corners. Trim quilt edges even.

## QUILTING AND FINISHING

**Step 4.** Layer and baste quilt top for quilting method of your choice (see Basic Quiltmaking Instructions <http://www.mccallsquilting.com/quilts/lessons/>). The block fabrics are outline quilted. Yellow squares feature a framed flower; the setting triangles are quilted using diagonal lines 3/4" apart.

**Step 5.** Bind quilt with beige solid fabric (see Basic Quiltmaking Instructions <http://www.mccallsquilting.com/quilts/lessons/>).



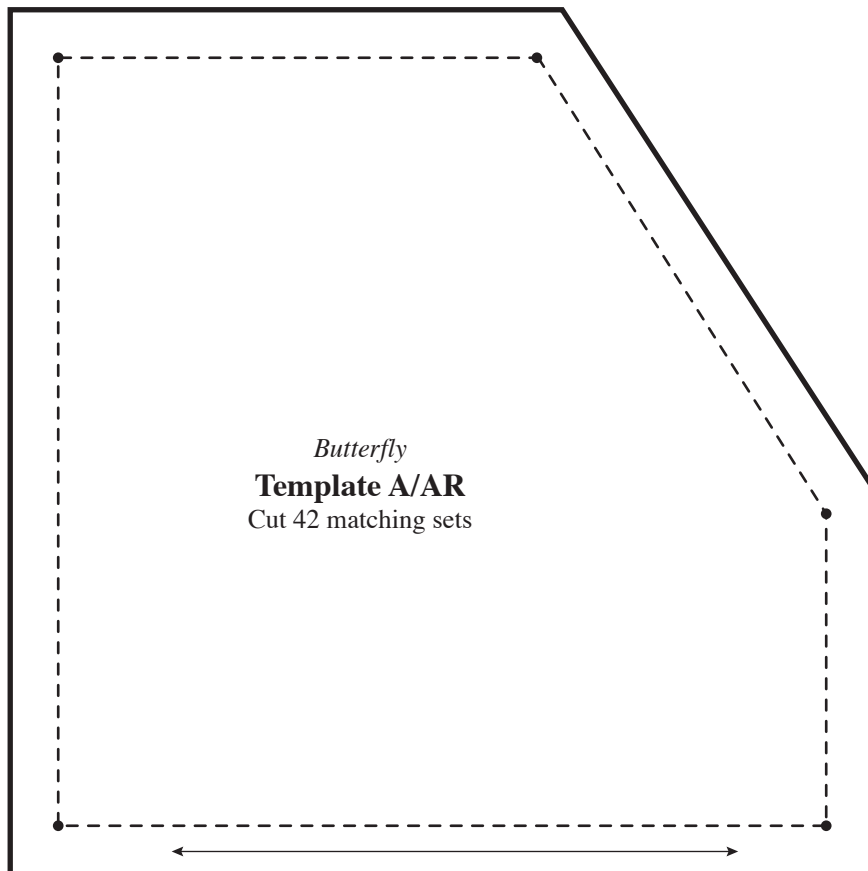
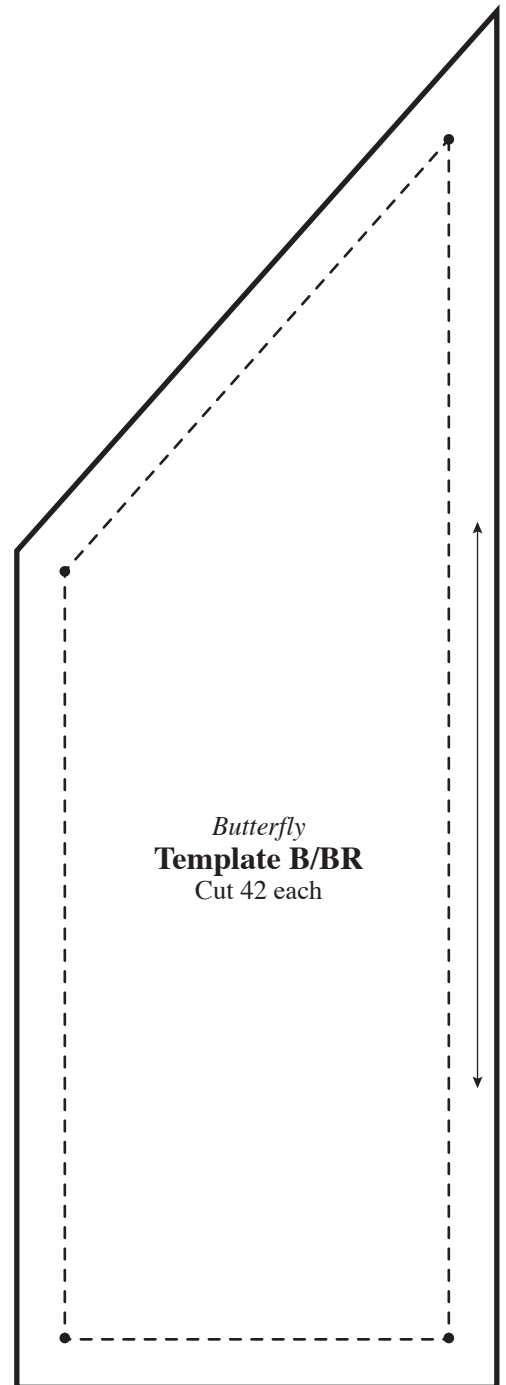
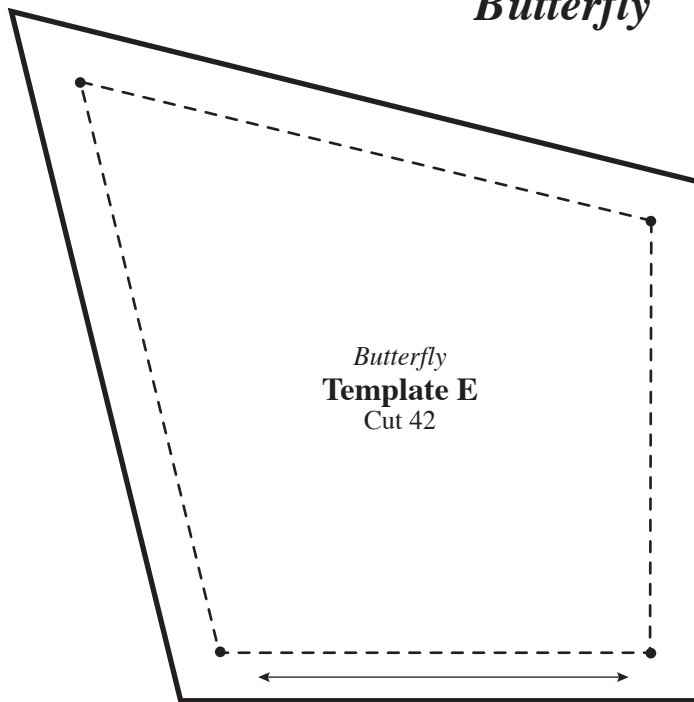
Assembly Diagram

Due to variations in materials and equipment, mccallsquilting.com disclaims any liability of untoward results in doing the project presented. Because mccallsquilting.com has no control over your choice of materials or procedures mccallsquilting.com assumes no responsibility for the use of this data.

Groups or individuals wishing to use this pattern to make quilts for humanitarian-related efforts are welcome to copy and distribute it to participating quilters. Please include our web site address, [www.mccallsquilting.com](http://www.mccallsquilting.com), on any patterns distributed. This pattern may not be reproduced for commercial use in any form. © Copyright 2002 PRIMEDIA Enthusiast Group, Inc. All rights reserved.

## Template Diagrams

### *Butterfly*



## Template Diagrams

### *Butterfly*

