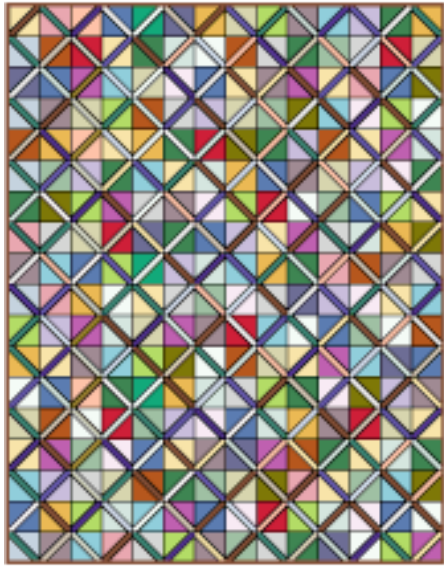


scrappity-do-dah

Throw Size Version



Designed by
Ann Weber of The Gingham Girls

Finished Quilt Size
63½" x 81½"

Number of Blocks and Finished Size
252 Lattice Blocks 4½" x 4½"

Fabric Requirements

Assorted prints (blocks)	10–10½ yds. total
Brown texture (binding)	⅞ yd.
Backing (piece lengthwise)	5⅞ yds.
Batting size	Twin

Other Materials

6½"-square acrylic ruler with diagonal line
Rotary cutter and mat

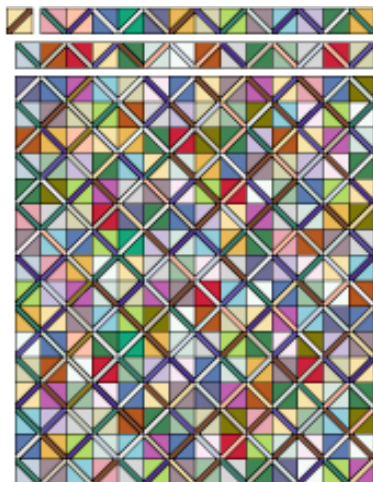
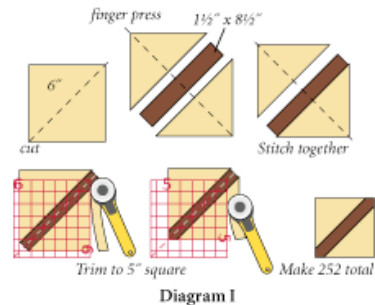
Cutting Instructions

Assorted prints—**cut a total of:**

- 252 squares 6" x 6"
- 252 strips 1½" x 8½"

Piecing the Blocks

1 Referring to Diagram I, cut assorted 6" squares in half diagonally to make 2 triangles. Finger-press triangles and an assorted 1½" x 8½" strip in half, and stitch triangles to sides of strip, matching folds. Using 6½" acrylic ruler and rotary cutter, trim unit to 5" square, aligning diagonal line on ruler with center of strip. Repeat to make 252 Lattice Blocks total.



Assembly Diagram

Quilt Top Assembly, Quilting, and Finishing

- 2 Referring to Assembly Diagram, sew 18 rows of 14 blocks each, rotating as shown. Sew rows together.
- 3 Layer, baste, and quilt. Bind with brown texture.

Designer Information

Ann Weber and Joanne Rowicki are The Gingham Girls, a sister design team with their own quilting business. To see more of their designs, visit www.inghamgirls.biz, or, for further information, email info@inghamgirls.biz.