



Ho Ho Ho Tree Skirt

Web-only Bonus Pattern

Finished Size: 40" x 40"

Number of appliquéd Santa Blocks and Finished Size:

4 blocks 18" x 18"

Yardage Requirements

- ... Green plaid - 1 1/4 yards
- ... Green solid - 10" x 13" (holly leaves)
- ... Red - 2 1/4 yards (sashing, triangles, Santa's hat & mouth, holly berries, backing and binding)
- ... Flesh - Fat quarter (Santa's face)
- ... White - 3/4 yard
- ... Batting - 44" x 44"
- ... Paper-backed fusible web - 1 yard
- ... 8 buttons 5/8" (eyes)
- ... Sewing thread
- ... Machine quilting thread

Cutting Instructions (Assemble Template Diagrams Drawing to make Templates)

Green Plaid

- ... Cut 4 squares 20" x 20" (oversized for trimming)

Green solid

- ... Cut 4 each Template I/IR

Red

- ... Cut 4 Template B
- ... Cut 4 Template F
- ... Cut 12 Template J
- ... Cut 4 squares 4 3/8" x 4 3/8"
- ... Cut 3 strips 4 3/8" x 14 5/8"
- ... Cut 2 strips 2 1/2" x 14 5/8"

Flesh

- ... Cut 4 Template A

White

- ... Cut 4 Template C
- ... Cut 4 Template D
- ... Cut 4 Template E
- ... Cut 4 each Template G/GR
- ... Cut 4 each Template H/HR
- ... Cut 11 squares 4 3/8" x 4 3/8"
- ... Cut 2 rectangles 2 1/2" x 4 3/8"

Appliquing Blocks

Step 1. Trace Templates A-J on paper side of paper-backed fusible web. Cut apart, leaving small margin beyond drawn lines. Following manufacturer's instructions, fuse to wrong side of appropriate fabrics; cut apart on drawn lines.

Step 2. Finger-press green plaid squares in half on both length and width; use folds as placement guide. Referring to Diagram I, position template fabrics. Following manufacturer's instructions,



fuse in place to make 4 Santa Blocks. Appliqué edges by machine or hand using buttonhole stitch (Diagram II). Square blocks to 18 1/2" x 18 1/2".

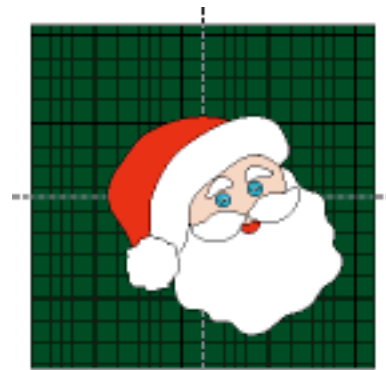


Diagram I

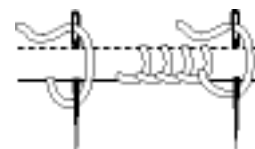


Diagram II

Step 3. Using Diagram III-A and III-B as a guide, add 2 white and 1 red triangles to corners (quick piece using 4 3/8" x 4 3/8" squares). Check to make sure color placement is same as shown in Diagrams. Measure and mark 4 1/8" on each side of remaining corner of green plaid square. Using marks as a guide, cut corner off of square.

Quick piecing: Draw line diagonally on wrong side of red square. Sew on line and cut away excess fabric 1/4" from seamline. Repeat steps for 2 white squares.

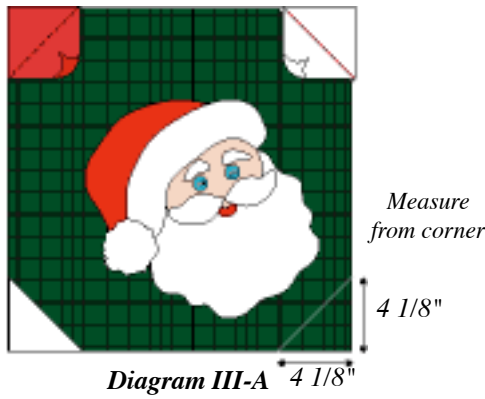


Diagram III-A 4 1/8"

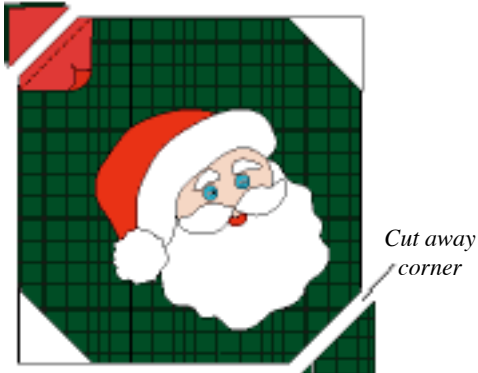


Diagram III-B

Assembling Tree Skirt

Step 4. Sew red 2 1/2" x 14 5/8" strip to white 2 1/2" x 4 3/8" rectangle (Diagram IV-A). Make 2 sashing strips.

Step 5. Sew red 4 3/8" x 14 5/8" strip to white 4 3/8" x 4 3/8" square (Diagram IV-B) Make 3 sashing strips.

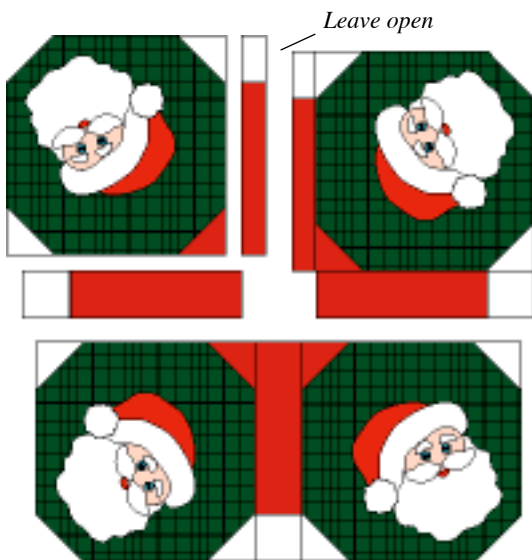


Diagram IV-A



Diagram IV-B

Step 6. Using Assembly Diagram as a guide, sew blocks and sashing together to make tree skirt. Leave seam open between two 2 1/2" x 18 1/2" sashing strip.



Assembly Diagram

Step 7. Make a circle cutting guide using Template K diagram. Place assembled tree skirt top on a flat surface. Using Diagram V as a guide, lay circle cutting guide (Template K) over square opening. Draw line around template. Using line as a guide, cut on line to make circular opening.

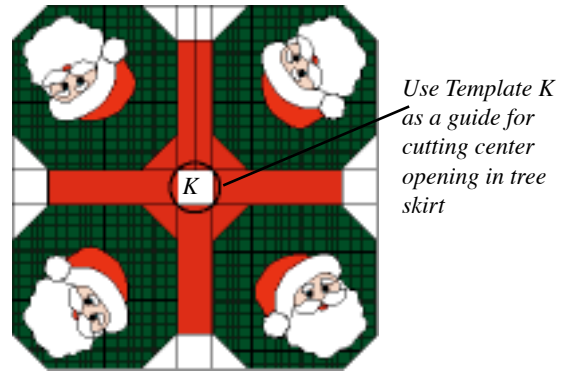


Diagram V

Step 8. Using Diagram VI as a placement guide, appliqué holly leaves and berries on white trapezoids on each side of tree skirt. When appliquéing pieces on side that is split, be sure to leave room for binding to be attached.



Diagram VI

Step 9. Layer and baste tree skirt top for quilting method of your choice. After quilting has been completed, trim backing and batting even with edge of tree skirt top. Using top's open side and center circle as cutting guide, cut batting and backing between 2" wide sashing strips and around center circle.

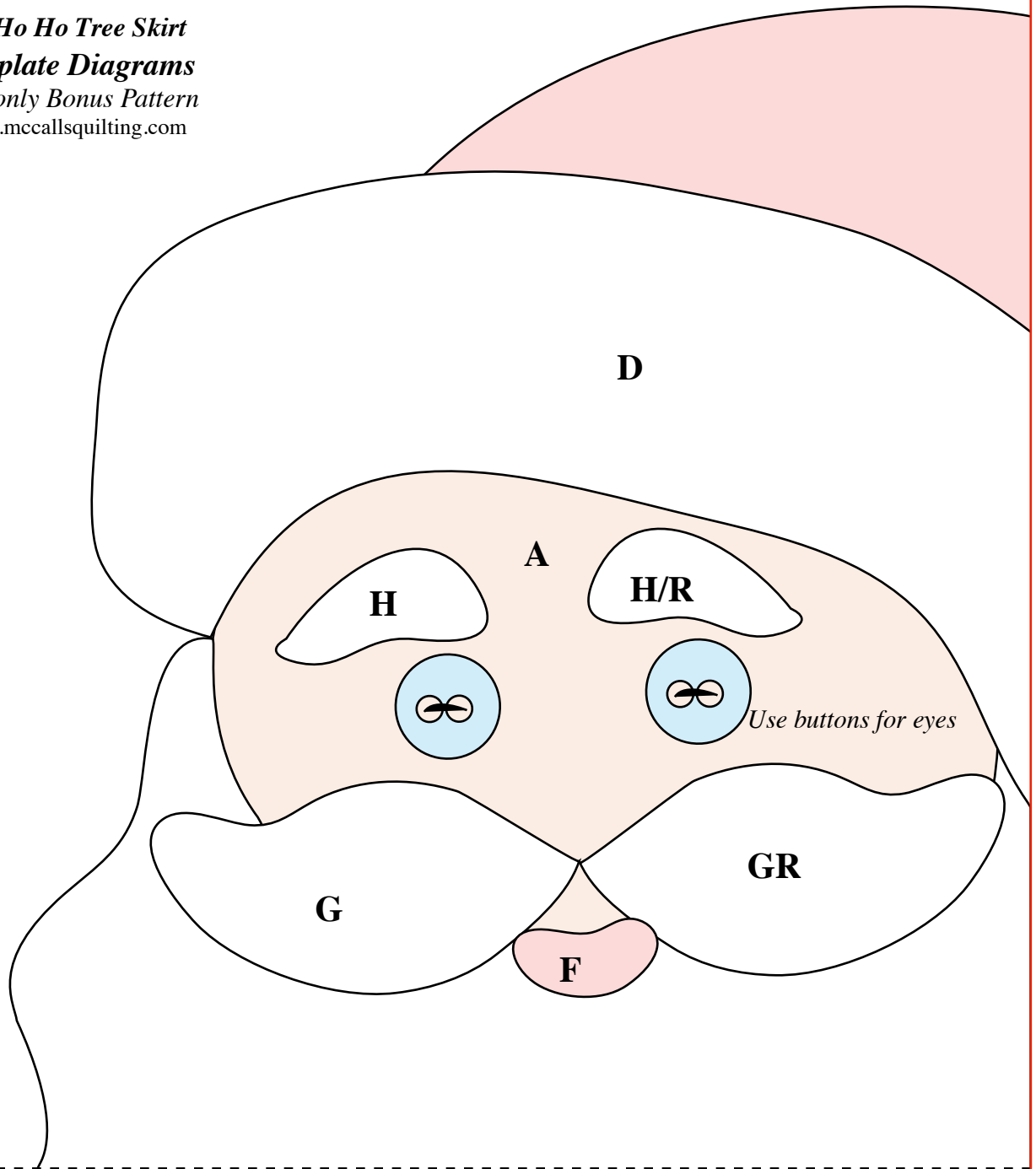
Step 10. Bind outer edge, slit and center circle of tree skirt with bias-cut red fabric.

Due to variations in materials and equipment, mccallsquilting.com disclaims any liability of untoward results in doing the project presented. Because mccallsquilting.com has no control over your choice of materials or procedures mccallsquilting.com assumes no responsibility for the use of this data..

© Copyright 2003 PRIMEDIA Enthusiast Group, Inc. All rights reserved.

Section 1

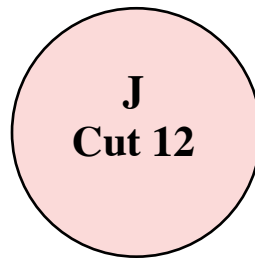
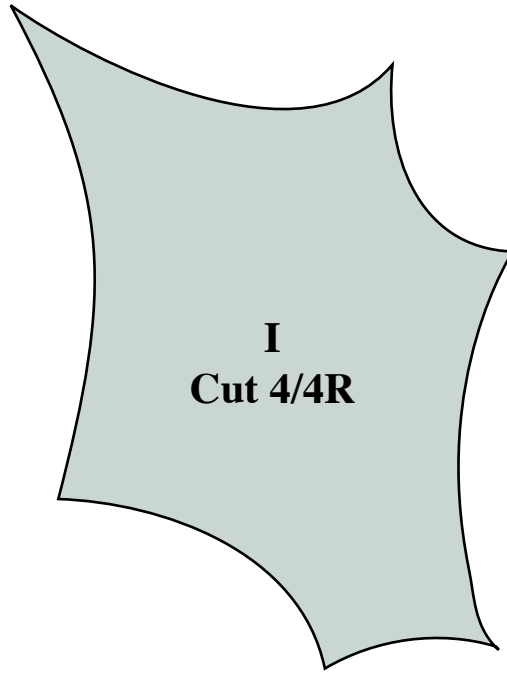
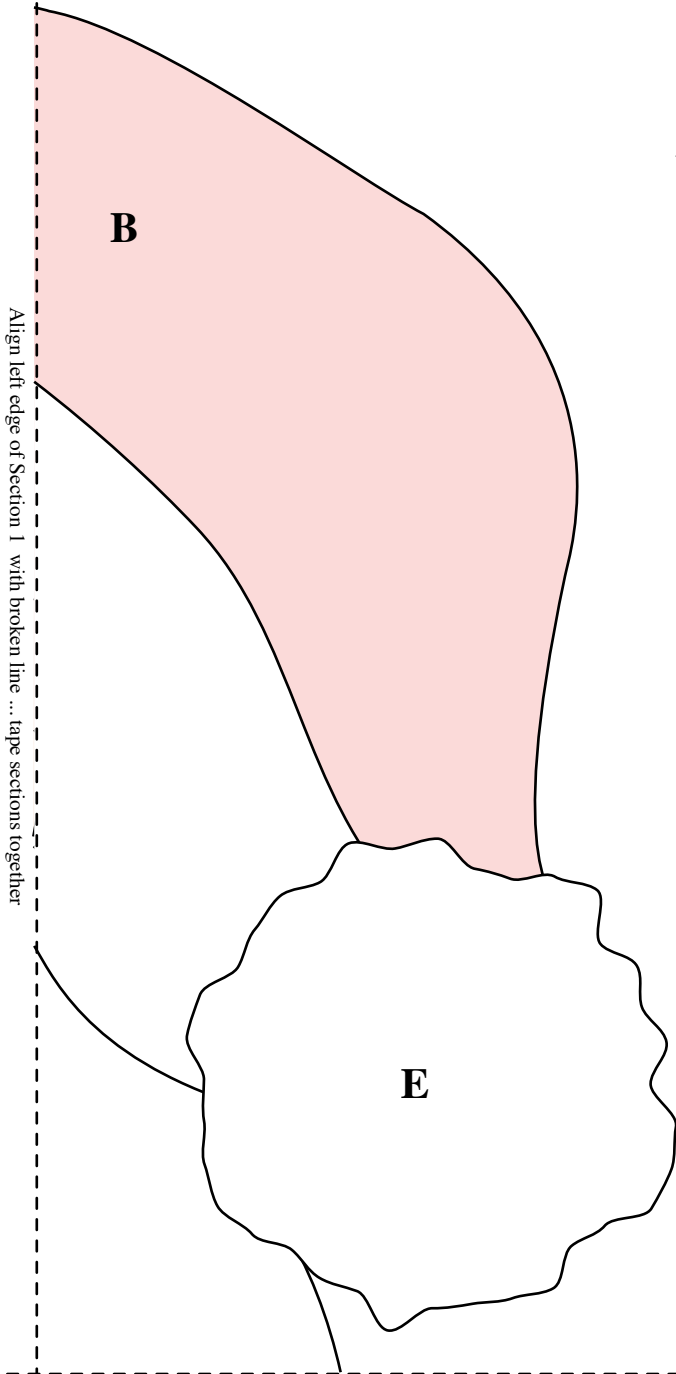
Ho Ho Ho Tree Skirt
Template Diagrams
Web-only Bonus Pattern
www.mccallsquilting.com



Use buttons for eyes

Align top of taped sections 3-4 with broken line ... tape together

Templates are printed reversed and without seam allowance for use with paper-backed fusible web.





C

Directions for Assembling Template Diagrams Drawing

Paper cutting scissors and transparent tape will be needed when assembling Santa appliqué drawing.

Step 1. Using paper cutting scissors, cut out Sections 1 through 4 using red lines as guide.

Step 2. Tape Section 1 to Section 2, using broken line as alignment guide. Note: When taping the sections together, align the appliqué lines, rather than the top and/or bottom of the two sections. The sections may vary a little in size, depending on how accurately they are printed and cut out. A little variance in section size is okay ... it will not affect alignment of the appliqué lines

Step 3. Tape Section 3 to Section 4.

Step 4. Tape Sections 1-2 to 3-4 to make Template Diagrams Drawing.



K
Tree Skirt
Center Opening
Cutting Guide

Align left edge of Section 3 with broken line ... tape sections together