

Table Tiles Web Bonus: Lap Size

Adapted from a Table Runner Designed by
Abigail Dolinger

Finished Quilt Size
57½" x 75½"

Number of Blocks and Finished Size
475 Roman Stripe Blocks 3" x 3"

Plan

A wide assortment of black fabrics and both warm and cool gray fabrics comprise the outer stripes of each block. A single gray texture and a single white-on-white print for the center stripes add cohesion to these scrappy blocks. You may wish to use a design wall to arrange your blocks before sewing them together.

Shop

Assorted black prints, solids, and textures (blocks)	2 ⅛-2 ¾ yds. total
Gray texture (blocks)	1 ⅛ yds.
Assorted gray prints, solids, and textures (blocks)	2 ⅛-2 ¾ yds. total
White texture (blocks)	1 ⅛ yds.
Black solid (binding)	¾ yd.
Backing (piece lengthwise)	5 yds.
Batting size	66" x 84"

Cut

(in order listed)

Assorted black prints, solids, and textures—
cut 22 sets of:

2 matching strips 1½" x width of fabric (WOF)

Gray texture

22 strips 1½" x WOF

Assorted gray prints, solids, and textures—
cut 22 sets of:

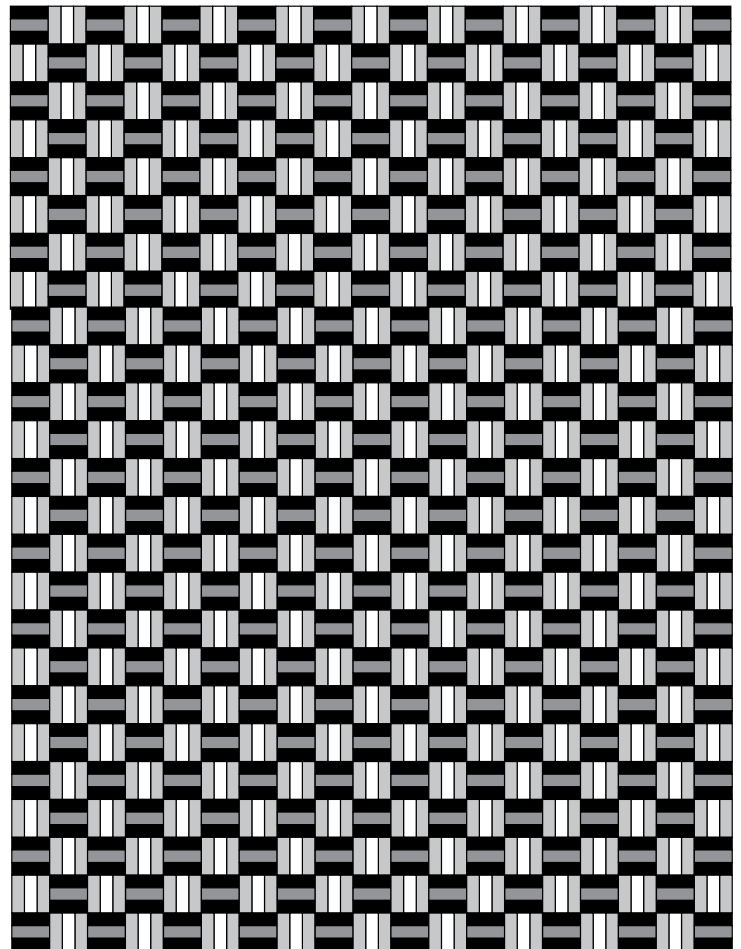
2 matching strips 1½" x WOF

White texture

22 strips 1½" x WOF

Black solid

8 strips 2½" x WOF (binding)



Sew

1 Referring to **Diagram I**, sew together 2 matching assorted black prints and 1 gray texture 1½" x WOF strips to make strip set. Make 22 total. Press in direction of arrows. Cut into 238 segments 3½" wide to make black Roman Stripe Blocks. In same manner, use 2 matching assorted gray and 1 white texture strips to make strip set (**Diagram II**). Make 22 total. Press, and cut into 237 segments 3½" wide to make gray Roman Stripe Blocks.



Diagram I

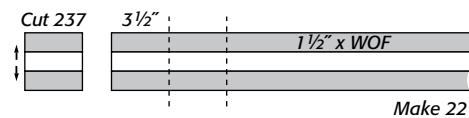
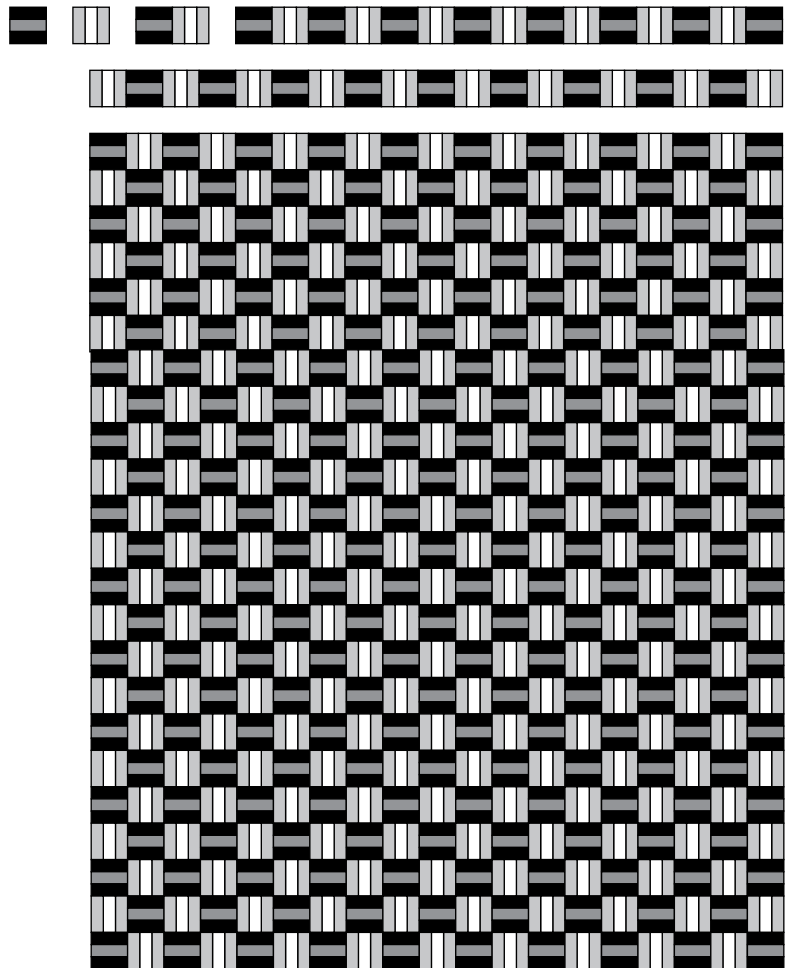


Diagram II

- 2** Note: Refer to **Assembly Diagram** for this step, watching block placement and orientation throughout. Sew 25 rows of 19 blocks each. Sew rows together.
- 3** Layer, baste, and quilt. Bind with black solid.



Assembly Diagram



This 15½" x 39½" table runner was patterned in the October/November 2014 issue of *McCall's Quick Quilts*.

