

Something Borrowed, Something Blue Web Bonus: Pillowcases



Designed by **GERRI ROBINSON**

Finished Pillowcase Size

20⁵/₈" x 28⁵/₈" plus lace trim

Fabric Requirements (for 2 pillowcases)

Blue/white large floral 1⁷/₈ yds.*
Lace (3" wide) 2¹/₂ yds.

*See **Fit for Royalty**. Fabric requirements based on 42" of usable width.

Fit for Royalty

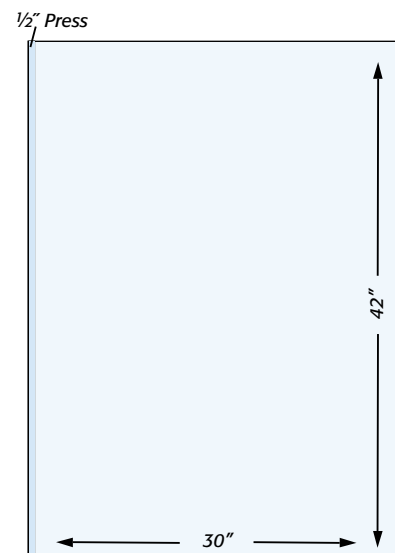
These pretty, luxurious pillowcases are a perfect match for Gerri's beautiful quilt. If you made the quilt, you'll have enough fabric left over to make the pillowcases. A double-turned inside seam creates a lovely finish.

Cutting Instructions (for 2 pillowcases)

Blue/white large floral
2 rectangles 30" x 42"
Lace
2 lengths each 42"

Making the Pillowcase

1 On long edge of blue/white rectangle, fold 1/2" to the wrong side and press. Fold under 1/2" again, and press (Diagram I).



2 With wrong sides up, (**Diagram II**), place folded edge of rectangle over lace, overlapping at least $\frac{3}{4}$ " ; pin in place from the wrong side of the fabric.

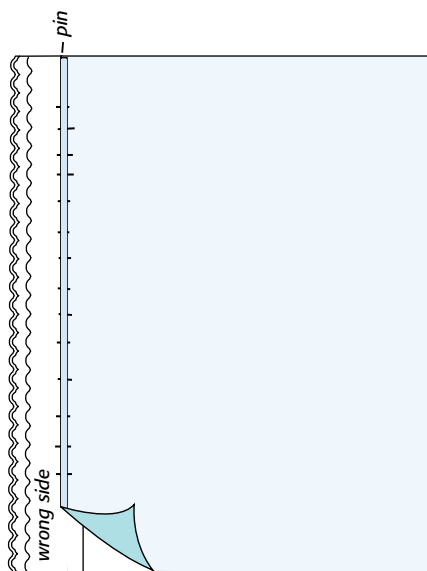
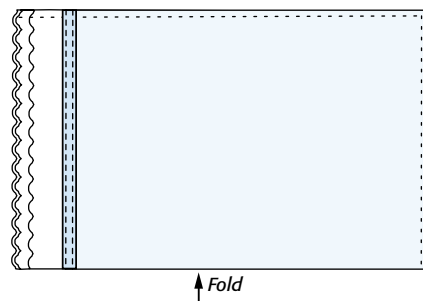


Diagram II

4 With right sides together, stitch side and bottom of pillowcase with a $\frac{3}{8}$ " seam allowance (**Diagram IV**). Finish raw edge of seams with a zigzag or serger stitch. Turn right side out and press. Repeat Steps 1-4 for second pillowcase.



3 With wrong side facing up, stitch $\frac{1}{8}$ " from each pressed edge (**Diagram III**).

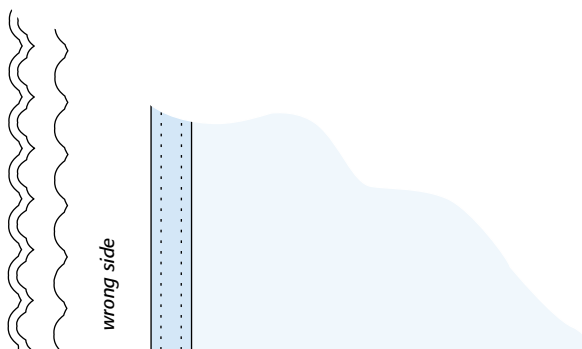


Diagram III

Kit Offer

A kit of fabrics for quilt top and binding is available while supplies last for \$185.00 ppd. (OH residents, \$197.49 ppd.) from Planted Seed Designs, 7430 Kilbrittain Lane, Dublin, OH 43017; 614-734-1183; plantedseeddesigns.com. A kit of fabrics for quilt top and binding and lace is available while supplies last for \$192.00 ppd. (OH \$204.96 ppd.). A kit of fabric for the quilt back is \$72.00 ppd. (OH \$76.86 ppd.).