

## Crimson Ribbons Web Bonus: Pillowcases



Designed by **GERRI ROBINSON**

**Finished Pillowcase Size**  
20<sup>5</sup>/<sub>8</sub>" x 28<sup>5</sup>/<sub>8</sub>" plus lace trim

**Fabric Requirements (for 2 pillowcases)**

Red print	1 <sup>7</sup> / <sub>8</sub> yds.*
Lace (3" wide)	2 <sup>1</sup> / <sub>2</sub> yds.
Fabric requirements based on 42" of usable width.	

**Pretty in Red**

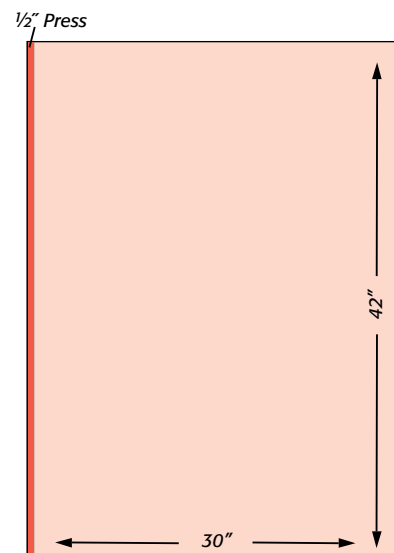
These pretty, luxurious pillowcases are a perfect match for Gerri's beautiful quilt.

**Cutting Instructions (for 2 pillowcases)**

Red print  
2 rectangles 30" x 42"  
Lace  
2 lengths each 42"

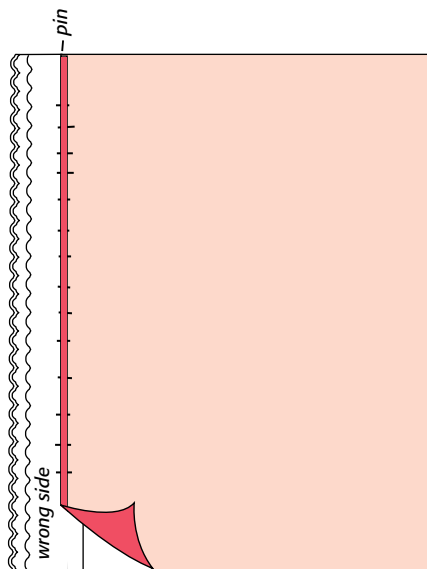
**Making the Pillowcase**

1 On long edge of red print rectangle, fold 1/2" to the wrong side and press. Fold under 1/2" again, and press (Diagram I).



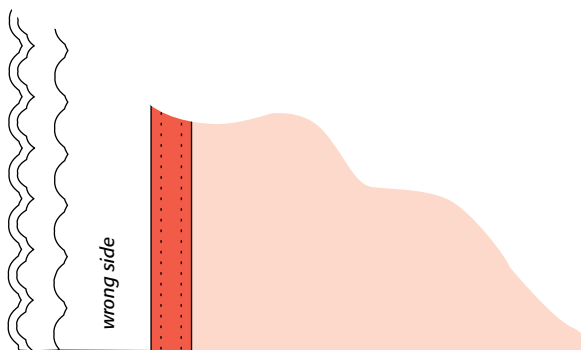
**Diagram I**

2 With wrong sides up, (**Diagram II**), place folded edge of rectangle over lace, overlapping at least  $\frac{3}{4}$ "; pin in place from the wrong side of the fabric.



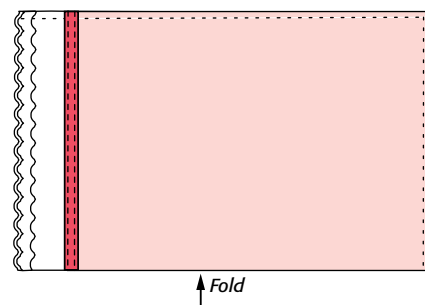
**Diagram II**

3 With wrong side facing up, stitch  $\frac{1}{8}$ " from each pressed edge (**Diagram III**).



**Diagram III**

4 Fold in half, right sides together and stitch side and bottom of pillowcase with a  $\frac{3}{8}$ " seam allowance (**Diagram IV**). Finish raw edge of seams with a zigzag or serger stitch. Turn right side out and press. Repeat Steps 1-4 for second pillowcase.



**Diagram IV**

### Kit Offer

A kit of fabric and lace for 2 pillowcases is available while supplies last for \$26.00 ppd. (OH residents, \$27.76 ppd.) from Planted Seed Designs, 7430 Kilbrittain Ln., Dublin, OH 43017; 614-734-1183; [plantedseeddesigns.com](http://plantedseeddesigns.com). A kit of fabrics for bed size quilt top and binding is available while supplies last for \$145.00 ppd. (OH, \$154.79 ppd.) Backing fabric (108" wide) is \$56.00 ppd. (OH, \$59.78 ppd.). A kit of fabrics for coordinating lap size quilt top and binding is \$98.00 ppd. (OH, \$104.62 ppd.); backing is \$48.00 ppd. (OH, \$51.24 ppd.).