

web
bonus



away at school

Dorm Pillowcases

Designed by
Laura Stone
Roberts

Finished Size
19³/₄" x 31" each



Planning

Both pillowcases were made with
Tonga Batiks from Timeless Treasures.

Fabric Requirements (for 2 pillowcases)

Pink mottle (facing)	1/2 yd.
Assorted bold/bright batiks (borders)	3-4 fat quarters*
	total
2 assorted light batiks (cases)	7/8 yd. each

*A fat quarter is an 18" x 20-22" cut of fabric or a true quarter of a yard.

Cutting Instructions

Pink mottle

2 strips $7\frac{1}{4}'' \times 40''$

Assorted bold/bright batiks

cut 2 sets of:

3 matching strips $1\frac{1}{2}'' \times 18''$

cut a total of:

*2 strips $6'' \times 40''$, pieced from

$1\frac{1}{2}$ - $4\frac{1}{2}'' \times 6''$ strips

2 assorted light batiks—cut from each:

1 rectangle $25'' \times 40''$

*See Step 1.

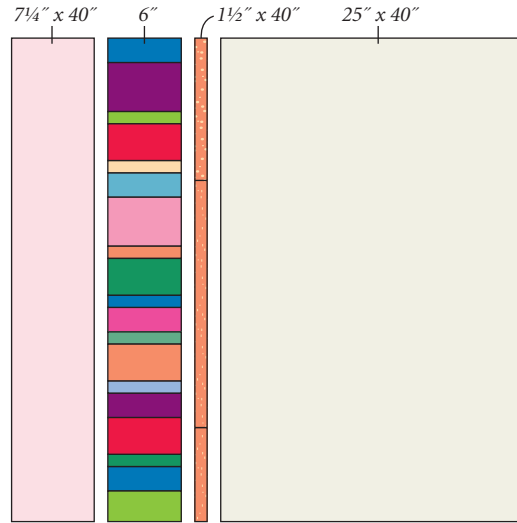


Diagram I-A

Piecing the Pillowcases

- 1 Referring to **Diagram I-A**, sew bold $1\frac{1}{2}$ - $4\frac{1}{2}'' \times 6''$ strips together to make two $40''$ strips. Sew 3 matching bold $1\frac{1}{2}'' \times 18''$ strips together end to end; trim to $40''$. Make 2 total. Stitch together pink $7\frac{1}{4}''$ strip, bold $6''$ pieced strip, bold $1\frac{1}{2}''$ strip, and assorted light $25'' \times 40''$ rectangle. Press in direction of arrows (**Diagram I-B**). Fold in half, right sides together, as shown by dashed line.
- 2 Using $\frac{1}{4}''$ seam allowance, stitch layers together along 2 sides (**Diagram II**).
- 3 To hem open end (pink), fold $\frac{1}{4}''$ to wrong side and press (**Diagram III**). Fold $\frac{1}{4}''$ to wrong side again and press. Stitch along fold. Turn remaining width of pink to wrong side so pink strip covers pieced strip and encloses seam allowance between $1\frac{1}{2}''$ strip and $25'' \times 40''$ rectangle (**Diagram IV**); press and pin.
- 4 Turn pillowcase right side out. Topstitch along seam line between $1\frac{1}{2}''$ strip and $25'' \times 40''$ rectangle, catching hemmed edge of pink facing inside (**Diagram V**). Make 2 pillowcases total.

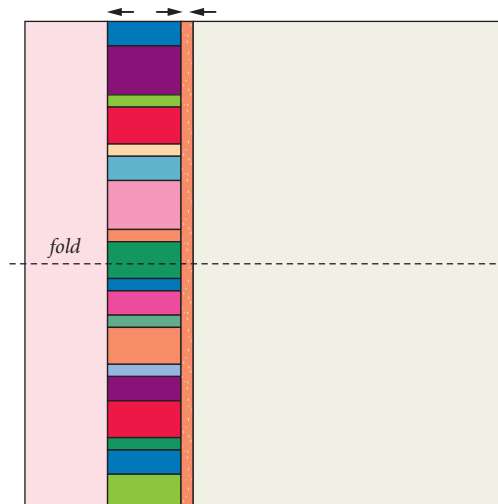


Diagram I-B

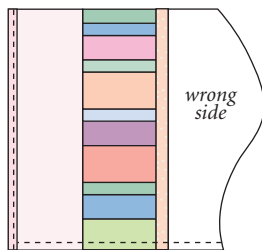


Diagram III

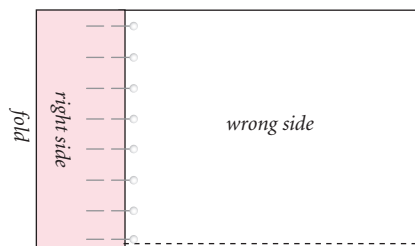


Diagram IV

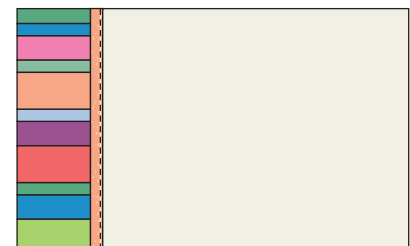


Diagram V

Make 2 total